



BRAJ VILAS

THE KINGDOM OF KRISHNA



“Our community center, located on the terrace, is designed to leave you feeling relaxed, refreshed, and recharged. Spending quality time with your family & friends and create incredible memories that will last a lifetime. At our project, quality construction and attention to detail are top priorities. Every element, from the finest materials to the modern amenities, is meticulously planned and executed to ensure a luxurious living experience that meets your highest standards.”

TERRACE GARDEN

TERRACE LOUNGE

OPEN GYM

STILT PARKING





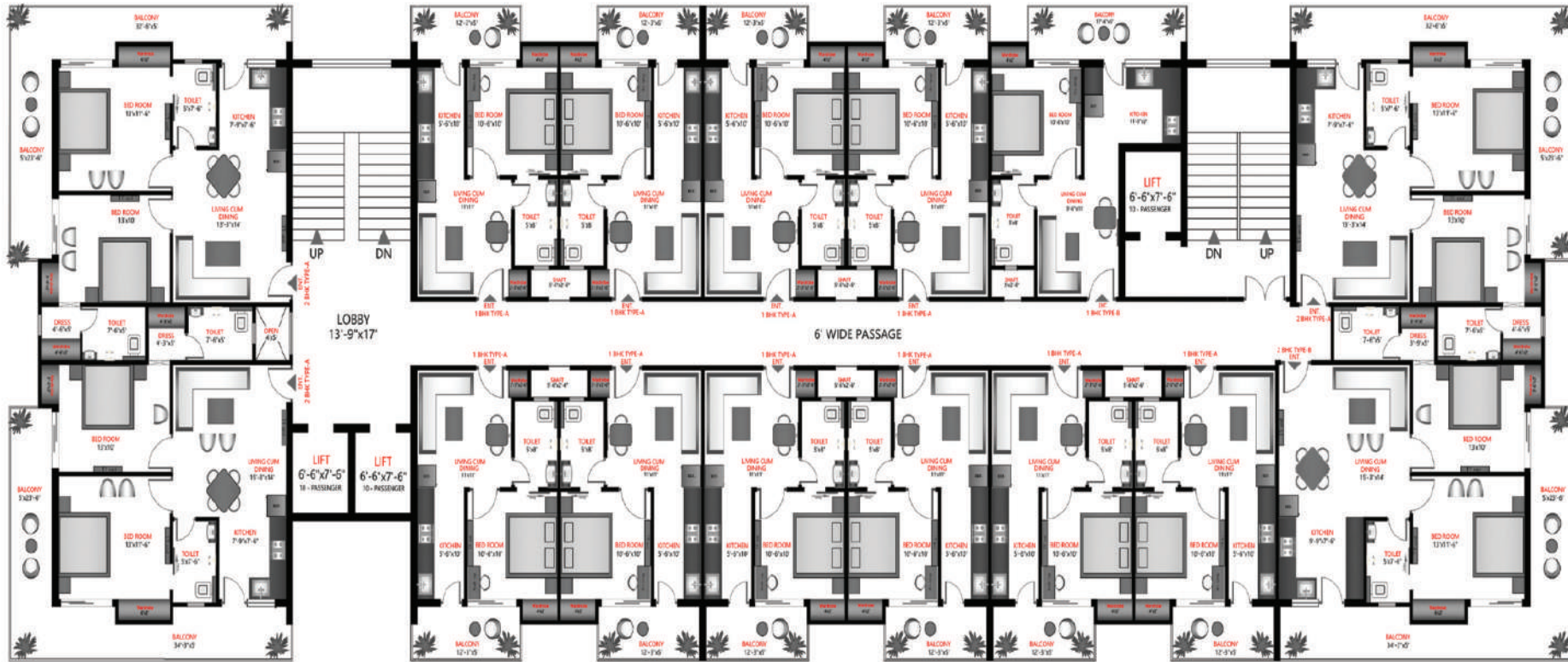
GRAND
ENTRANCE

“Welcome to BRAJ VILAS, a premium residential project in the heart of Vrindavan, brought to you by BRIJ SAI BUILDTECH P. LTD. an esteemed builder with years of experience in the real estate and construction industry. We are excited to announce our project of luxury apartments in this divine city that perfectly harmonizes with the spiritual surroundings of Vrindavan.”



“At Brij Sai Buildtech Pvt. Ltd. we understand that buying a home is a significant investment, our experts are available to guide you through the entire process, making it seamless and stress-free. From selecting the perfect apartment to the final handover, we aim to make your experience hassle-free and memorable.”

MASTER PLAN



30' WIDE ROAD

30' WIDE ROAD

30' WIDE ROAD

30' WIDE ROAD

GUARD ROOM

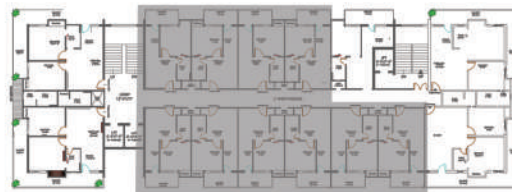
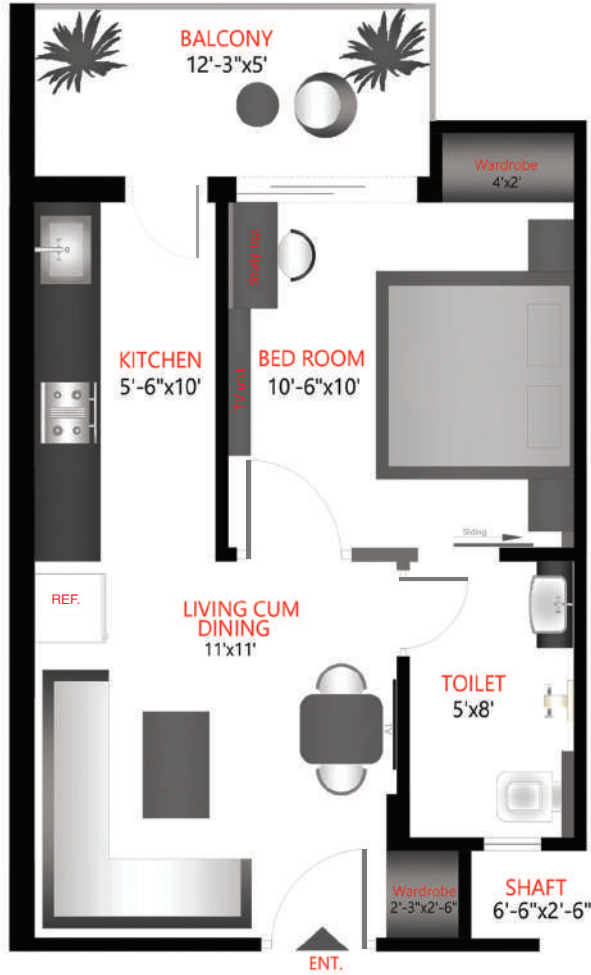
GATE

ENTRY FOR GROUP HOUSING

40' WIDE ROAD



1- BHK (TYPE-A)
SUPER AREA = 593.38 SqFt.



KEY PLAN

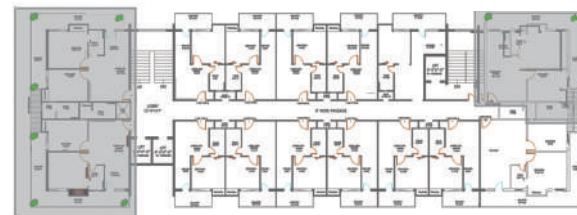
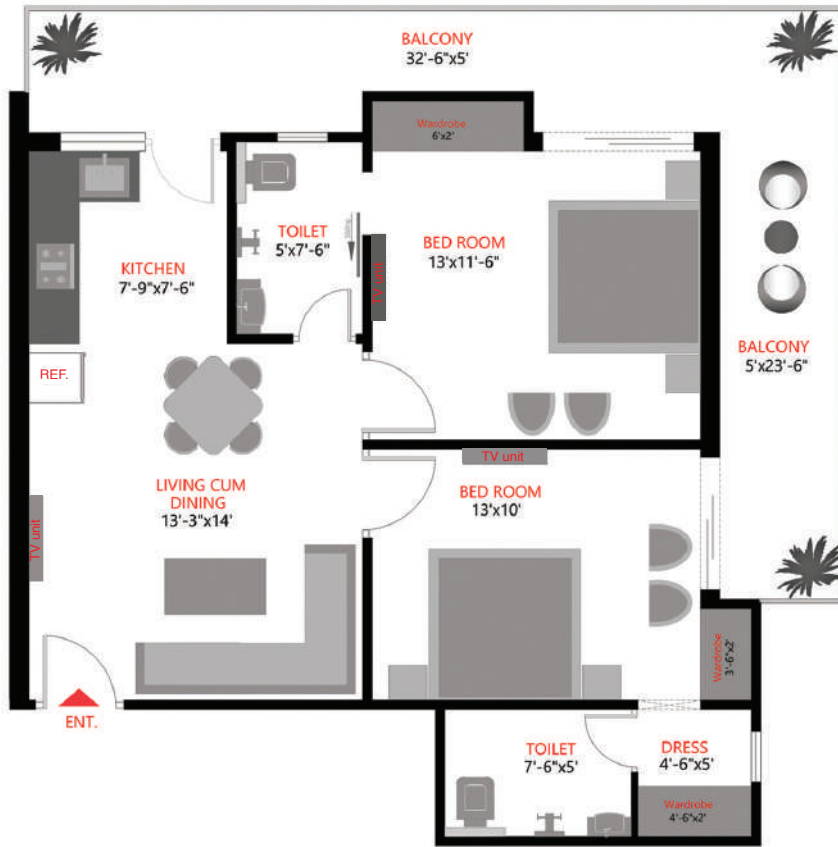
1- BHK (TYPE-B)
SUPER AREA = 674.294 SqFt.



KEY PLAN

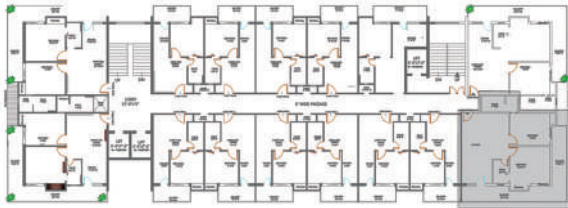
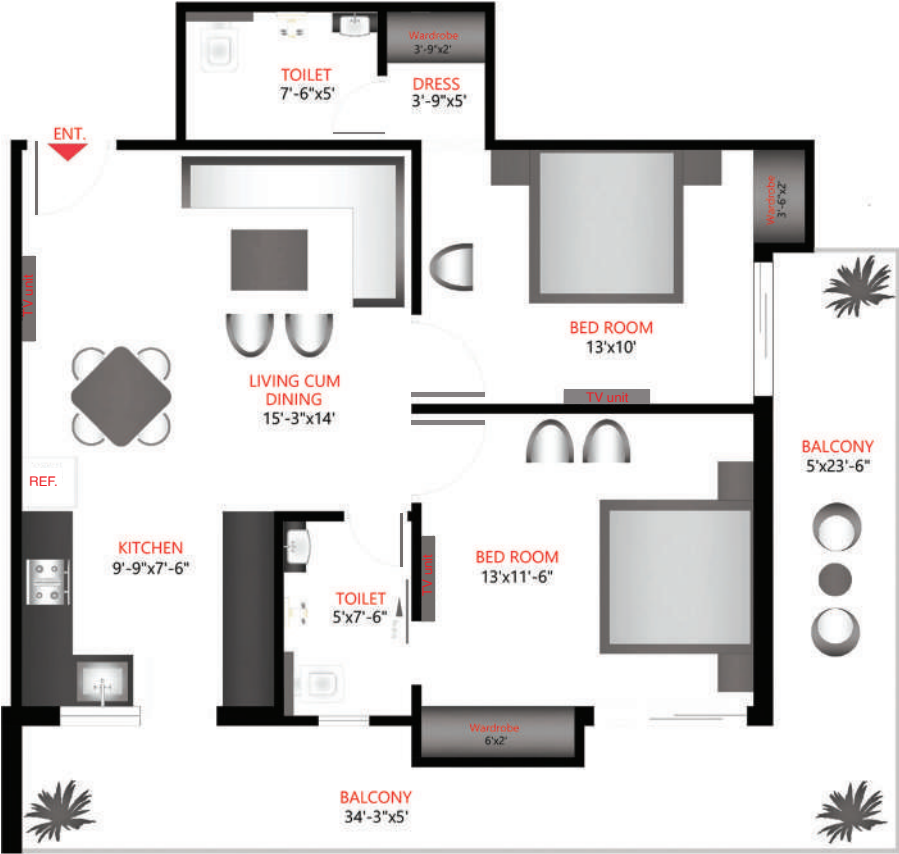
"All specifications, designs, layout changed at the discretion of the builder/architect/authority. These are purely conceptual and constitute no legal offerings."

2- BHK (TYPE-A)
SUPER AREA = 1295.99 SqFt.



KEY PLAN

2- BHK (TYPE-B)
SUPER AREA = 1364.776 SqFt.



KEY PLAN

"All specifications, designs, layout changed at the discretion of the builder/architect/authority. These are purely conceptual and constitute no legal offerings."



“If you're looking for an ideal place to stay near the temples and ashrams of Braj, look no further than Braj Vilas. Our upscale apartments offer modern amenities, and the terrace lawn and enclosures are the perfect spots for socializing with friends and family.”



SPECIFICATIONS

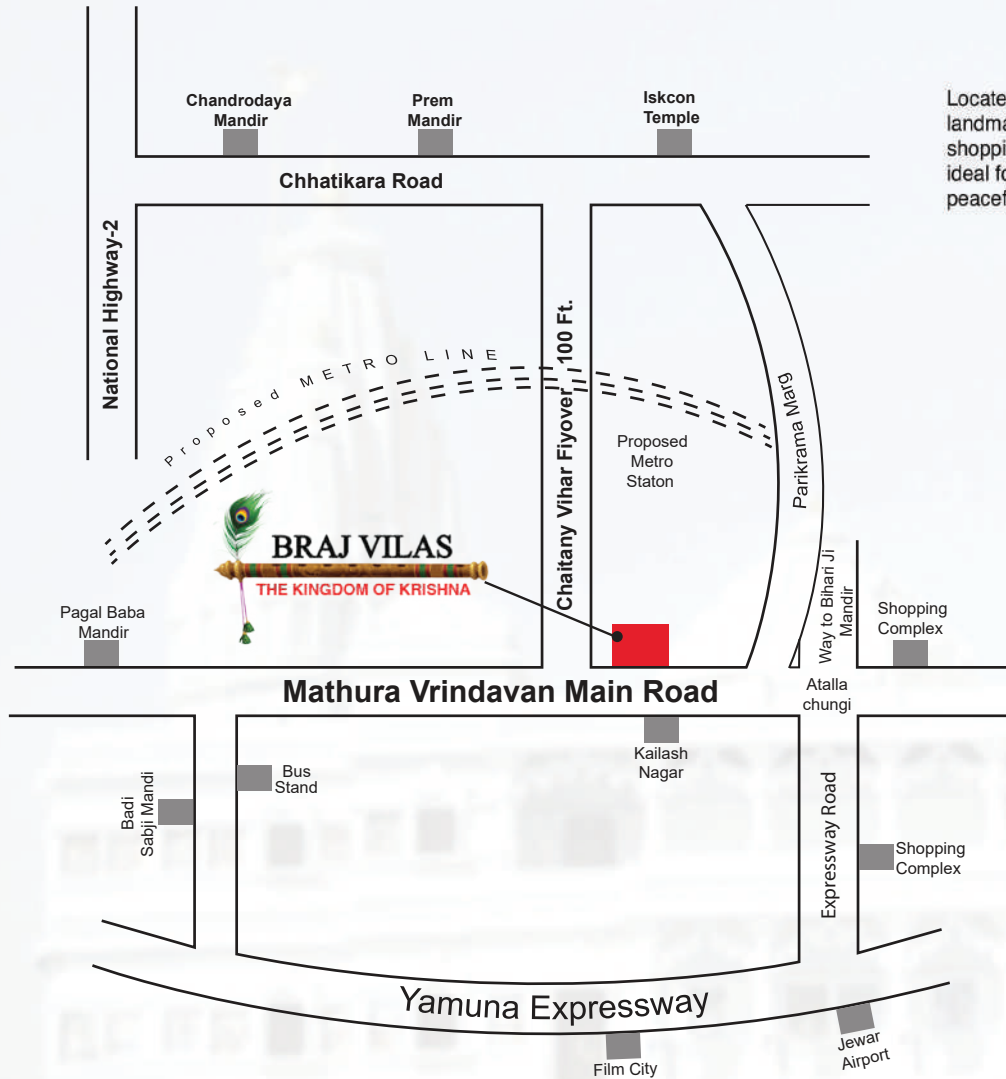
- Structure
 - Earthquake resistant Steel/RCC frame structure designed as per relevant IS code.
 - High-speed lifts and wide staircase with easy steps for convenient access.
- Flooring
 - Vitrified tiles for a stylish and durable flooring option throughout the apartment.
- Kitchen
 - Semi-modular kitchen with a granite countertop modern look working platform.
 - Ceramic glazed tiles up to 2 feet above the working platform.
 - Stainless steel sink for durability and easy maintenance.
- Toilet
 - Anti-skid ceramic tiles for enhanced safety in wet areas.
 - Ceramic tiles on the walls up to the door level.
 - CP fittings of Jaquar or equivalent, ensuring high-quality fixtures.
- Electrical
 - Copper wiring in concealed P.V.C conduits for safety and reliability.
 - MCB supported circuits for better protection against electrical faults.
 - Adequate number of lights and power points.
 - Provision for FTTH (Fiber to the Home) connection for high-speed internet access.
 - Provision for telephone connection.
- Door & Windows
 - Termite-proof, corrosion-proof, bending-proof, and fire-proof doors and windows.
 - Skin molded flush doors for a modern and clean look.
- Interiors
 - POP (Plaster of Paris) plaster for smooth and aesthetically pleasing walls.
 - Designer ceilings to add a touch of elegance to the interiors.
- Exterior
 - Superior paint finish for a visually appealing and long-lasting exterior.
- Balcony
 - Anti-skid ceramic tiles for safety and durability.

“We invite you to experience the warmth and grace in the kingdom of Lord Krishna through our exceptional residential project with our latest offering "Braj Vilas" & discover the ultimate journey of luxury and spirituality right in the heart of Vrindavan. Stay tuned for updates on our upcoming project and be a part of our vision.”

“Our specifications aim to provide you with a home that is both visually appealing and functional, with a touch of luxury. Each apartment is carefully designed to maximize space and natural light, creating a peaceful and serene environment. With spacious living areas, well-appointed bedrooms, and elegant bathrooms, our apartments are designed to meet all your needs while ensuring safety, durability, and aesthetic appeal throughout the residential group housing project.”

AMENITIES

- 1 & 2 BHK Apartment.
- Ganga Water Supply for drinking.
- Spacious Balconies.
- Vastu Compliant.
- Grand Entrance.
- Secure Gated Community.
- Fire Tender movement.
- CCTV Surveillance in common areas.
- 100% power backup for common areas.
- Car Parking.
- Visitors Car Parking.
- Community Centre on Terrace.
- Terrace Lounge for Social Gatherings.
- Yoga Meditation Lawn at Terrace Garden.
- Outdoor Gym at Terrace Garden.
- Shopping Centre nearby.
- Departmental Stores nearby.
- Medical Facilities nearby.
- Schools nearby.
- Bank Loan Available.



Located right at the heart of Vrindavan, our prime location ensures easy access to all the major landmarks and amenities of the city, including temples, ashrams, schools, hospitals, and shopping centers. Being in close proximity to various temples and ashrams, our apartments are ideal for those seeking spiritual roof. We have carefully designed the project to provide a peaceful and serene environment, perfect for meditation and self-reflection.

PROJECT LOCATION ADVANTAGE

WELL-LINKED TO MAJOR LANDMARKS

- Atalla Chungi - 0.7 kms.
- Proposed Metro Station - 0.5 kms.
- Bus Stand - 2.3 kms.
- Railway Station, Mathura - 11 kms.
- Taj Mahal Agra - 78 kms.
- Yamuna Expressway - 09 kms.
- National Highway 2 - 06 kms.
- Noida International Airport - 80 kms.
- New Delhi - 145 kms.

NEAREST TEMPLE

- Shri Pagal Baba Mandir - 01 kms.
- Banke Bihari Mandir - 2.5 kms.
- Govind Dev Ji Mandir - 2.7 kms.
- Sri Krishna-Balarama Mandir (ISKCON) - 2.8 kms.
- Sri Rangnath ji Mandir - 3.1 kms.
- Prem Mandir - 3.5 kms.
- Chandrodaya Mandir 4.7 kms.
- Lotus Temple - 5.3 kms.
- Char Dham Mandir - 6.9 kms.



Head Office / Site Address: Brij Sai Buildtech Pvt. Ltd. Near Atalla Chungi, Vrindavan.

✉ info@brajvilas.com

🌐 www.brajvilas.com



Promoter Registration Number: UPRERAPRM232872